



**Luca**  
Visual FX



## Introducing Lo-Fi Look for Final Cut Pro X

Designed to apply an intriguing vintage feel to footage, Low-Fi Look is also an elegant solution for moody and surreal videos...



The effect comes with an optional frame border that the user can customise at will and a generous number of parameters to create your own look. However, what really makes the big difference is the image well in the parameters, which allows the use of your own textures/patterns or even video clips. As a result customisation options are endless. Take a look at [demo 1](#) and [demo 2](#) to get a better ideas of looks achievable.

## Lo-Fi Look OSC and Built in Preset:

Lo-Fi Look features OSC (On Screen Controls), see Pics 1 & 2, for Color Gradients shifting/positioning and 12 different **Gradients Presets**, Pic 04. Each one of them is customizable with the aid of parameters like **Gradient Intensity**, **Gradients Radius** and **Variations**.



Pic 01



Pic 02



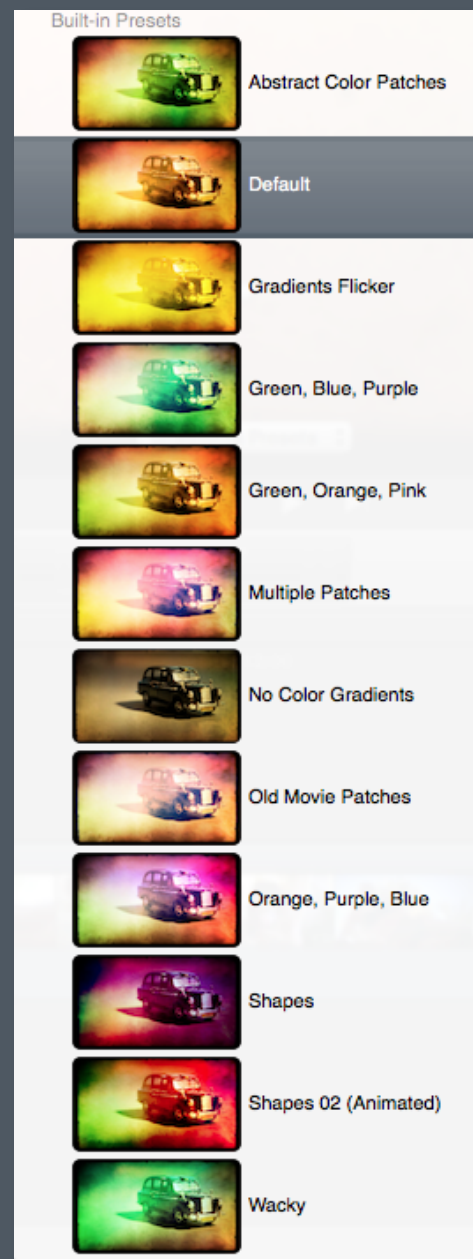
Pic 03



Pic 05



Pic 06



Pic 04. Presets



Pic 07



## Lo-Fi Look Parameters:

**Luminosity** - **Light Flickering** and **Frequency** are crucial to control the light intensity and intermittency. In order to emulate a really old and damaged footage you may want to increase the values of one or more of these parameters to taste.

By changing the value of **Blue<>Red Range** - **Green<>Purple Range** and **Saturation** you can drastically modify the color temperature of your clip. These particular color controls have been implemented specifically to add a “lo-fi” look to the footage where color range, definition and variety is substantially reduced.

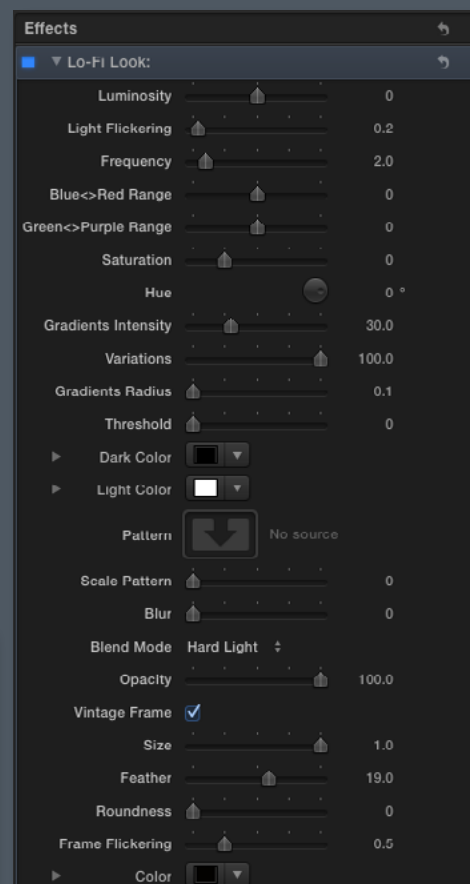
**Threshold**, along with the related **Dark Color** and **Light Color** pickers can be used to add or highlight the grain/noise and grunginess of the textures, the intensity of the texture may become animated if the **Light Flickering** is visible enough. **Opacity** and **Blur** will soften the texture giving a more diffused look.



Pic 08

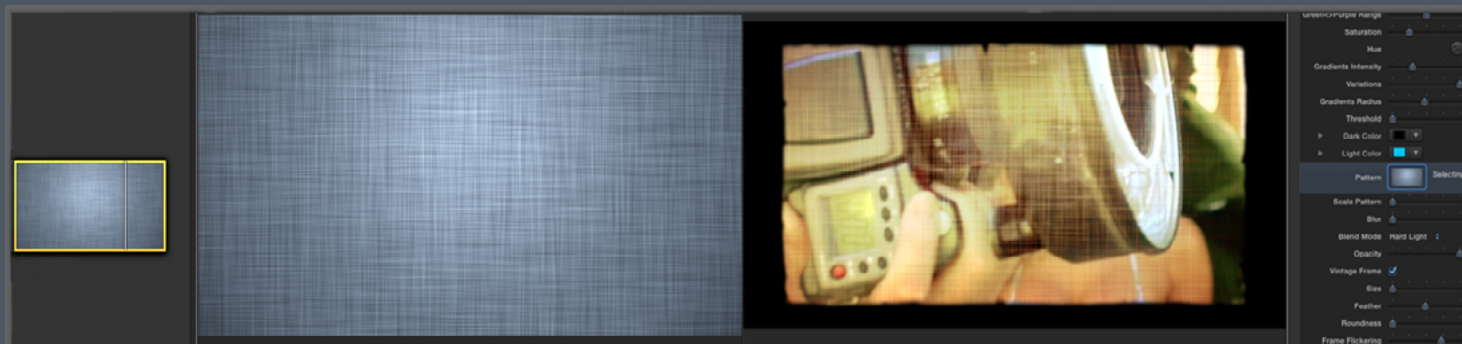


Pic 09



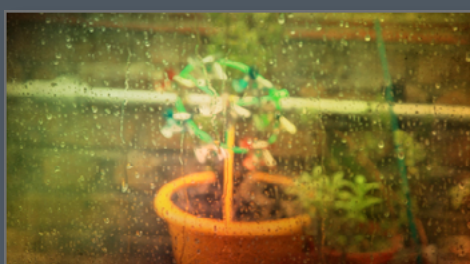
Pic 10. Parameters

One of the most useful parameters in Lo-Fi Look is the **Image Well**, see Pic 11, which allows the implementation of your own textures and video clips as overlays. Furthermore you can customise these with parameters like **Scale Pattern** - **Blur** - **Blending Mode** (We recommend trying different blend modes to see how many looks can be achieved) or **Opacity**.



Pic 11. Image Well

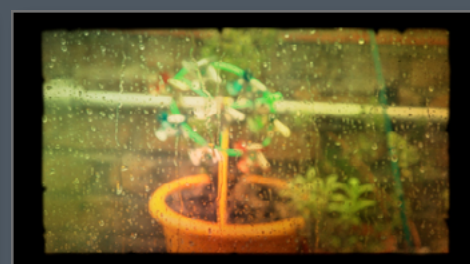
Another main feature of Lo-Fi Look is the optional **Vintage Frame**, Pics 12, 13 & 14 (make sure your **Vintage Frame** box is checked). Use the **Feather** control to smooth or sharpen the slightly consumed/aged edge and increase the **Frame Flickering** to animate it in the fashion of an old projector. Use the **Scale** parameter to gently customise the size of the frame and **Roundness** to stylise the corners to taste. It is also possible to change the frame **Color** with the color picker.



Pic 12



Pic 13



Pic 14

# System Specifications & Requirements



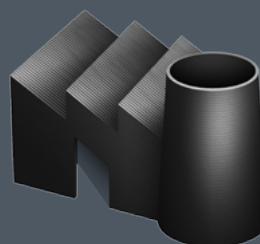
FCP X 10.0.7 or above



Mac OSX 10.7 or above



FCP X 6 or above



FxFactory 4.0.6 or above  
Downloadable from [here](#)



Premiere Pro 6 or above

A graphics card  
of at least 1GB is strongly recommended



After Effects 10 or above



Motion 3 or above