

# Video Walls

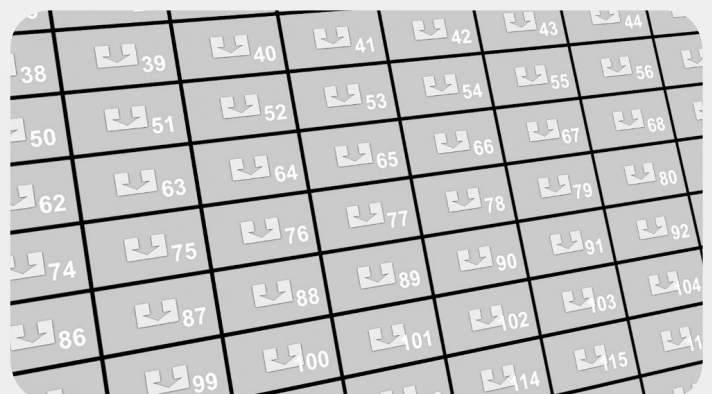
## For Final Cut Pro X



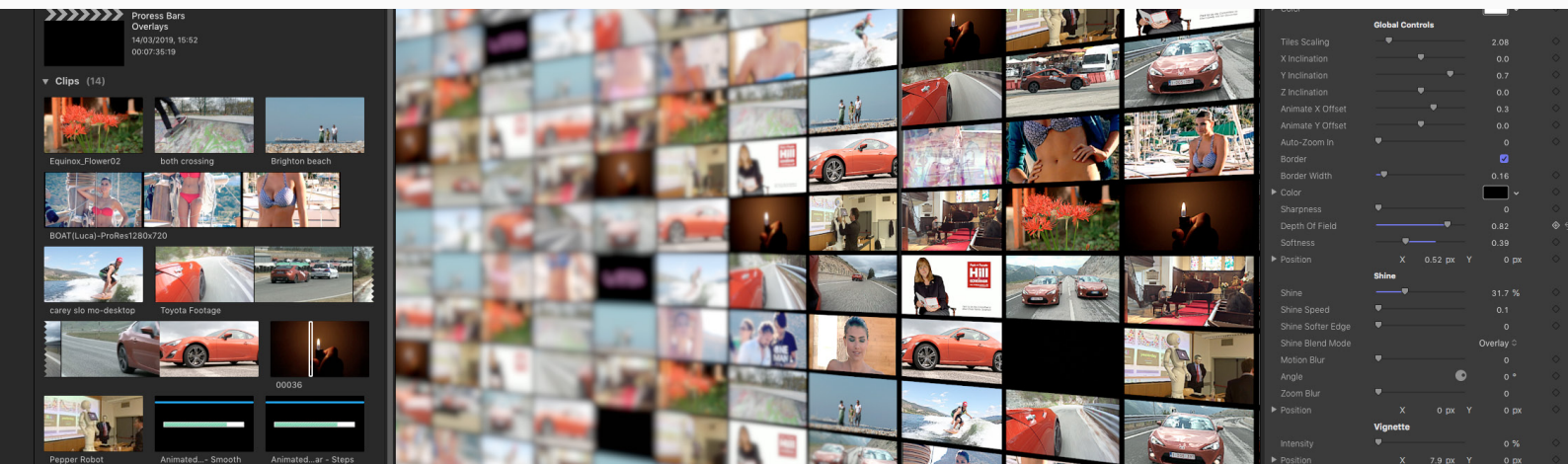
This plugin for Final Cut Pro X comes with four different templates designed to create impressive video walls using your own media. The user can load up to 144 custom clips either from different footage or the same source. Video Walls can produce some truly remarkable and creative visuals for a wide variety of projects spanning from music videos to presentation/corporate videos and from news to sport, documentaries and much more.



Loading all the clips is made easy thanks to guiding numbers for each drop zone. It takes an average of ten minutes to complete the wall, we recommend first to create a specific look and design by using the various customization controls then drop your media and when you are ready render.



# Side View

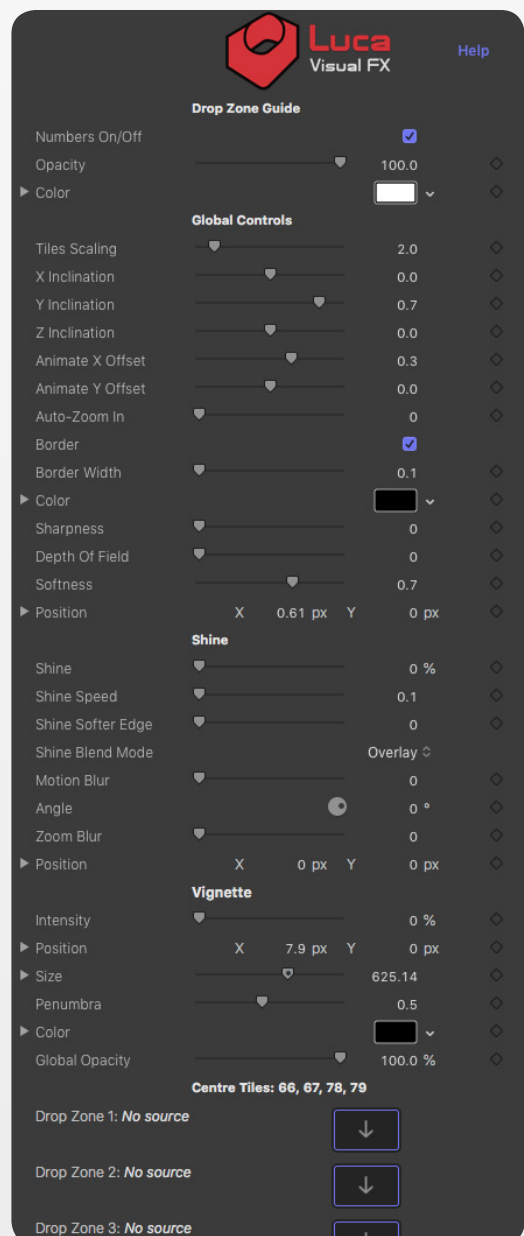


The first one is called Side View. By default it shows the wall in perspective and is already animated. Please see below for some specific info about parameters. By using Depth of Field and Vignette the user can create some really cool dynamic effects that are sure to catch the attention of the viewer.

Use the 'Global Controls' to arrange the overall look of the clip. Set the thickness of the border with 'Border Width' and change its 'Color' if required. Adjust the 'Depth Of Field' to add a focus to the nearest or furthest areas.

'Shine' adds an animated glistening effect to the overall clip. Use 'Shine' parameters to customize the look.

For best results, use a 29.97 or 59.94fps timeline with this template.

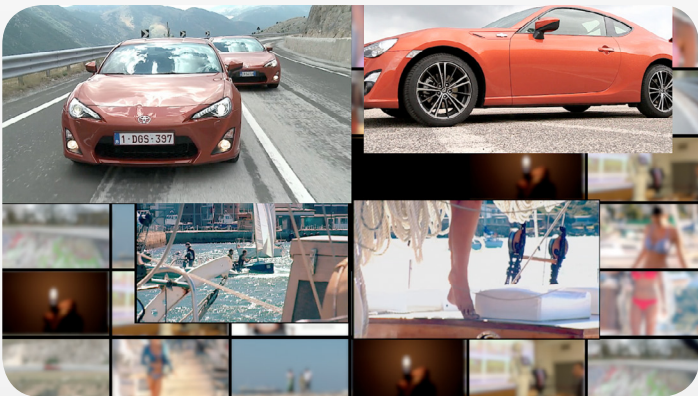


# Front View

## Four Custom Tiles

The second template presents a front view of the video wall with the additional feature of four central customizable drop zones or tiles, which can detach from the wall, repositioned, scaled up and more.

Use the parameter in the 'Breakout Clip Stylize' section to highlight 'Clip 66', 'Clip 67', 'Clip 78' and/or 'Clip 79'. 'Blur BG Videos' and 'Darken BG Videos' to make the highlighted clips stand out more.



**Luca Visual FX** Help

**Drop Zone Guide**

Numbers ☐ 5

Opacity  100.0

Color

**Global Controls**

Position X 0 px Y 0 px

Scale  201 %

Border Width  0.5

Border Color

Sharpness  0.3

**Shine**

Shine  0 %

Shine Speed  0.1

Shine Softer Edge  0

Blend Mode  Overlay

Zoom Blur  0

Center X 0 px Y 0 px

Motion Blur  10.35

Angle  0 °

**Vignette**

Intensity  0 %

Position X 0 px Y 0 px

Size  429

Penumbra  0.5

Vignette Color

**Breakout Clip Stylize**

Clip 66  0.2

X.Position 94.0 px

Y.Position -270.91 px

Clip 67  0.18

X.Position -328.22 px

Y.Position -46.6 px

Clip 78  0.1

X.Position 79.6 px

Y.Position 45.9 px

Clip 79  0.1

X.Position -85.43 px

Y.Position 45.1 px

Blur BG Videos  0

Blur Clip 66  0

Blur Clip 67  0

Blur Clip 78  0

Blur Clip 79  0

Darken BG videos  0

Darken Clip 66  0

Darken Clip 67  0

Darken Clip 78  0

Darken Clip 79  0

BG Fill Color

**Centre Tiles: 66, 67, 78, 79**

Drop Zone 1: No source

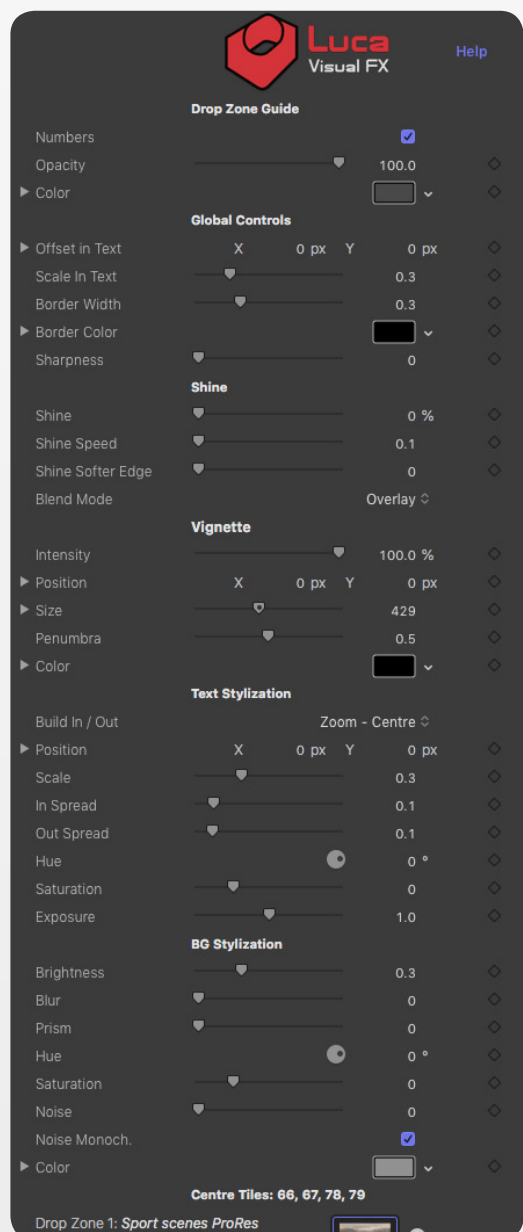
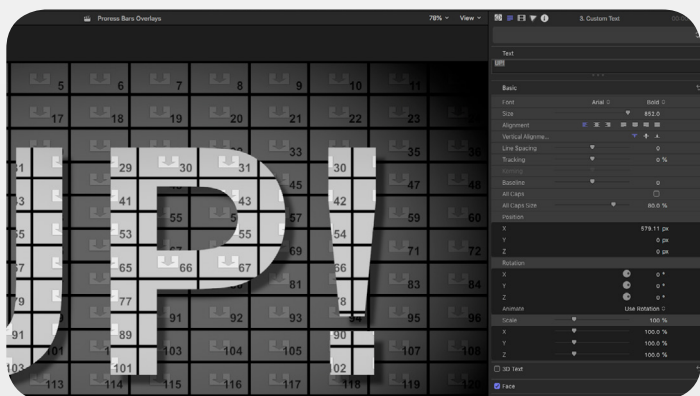
# Custom Text



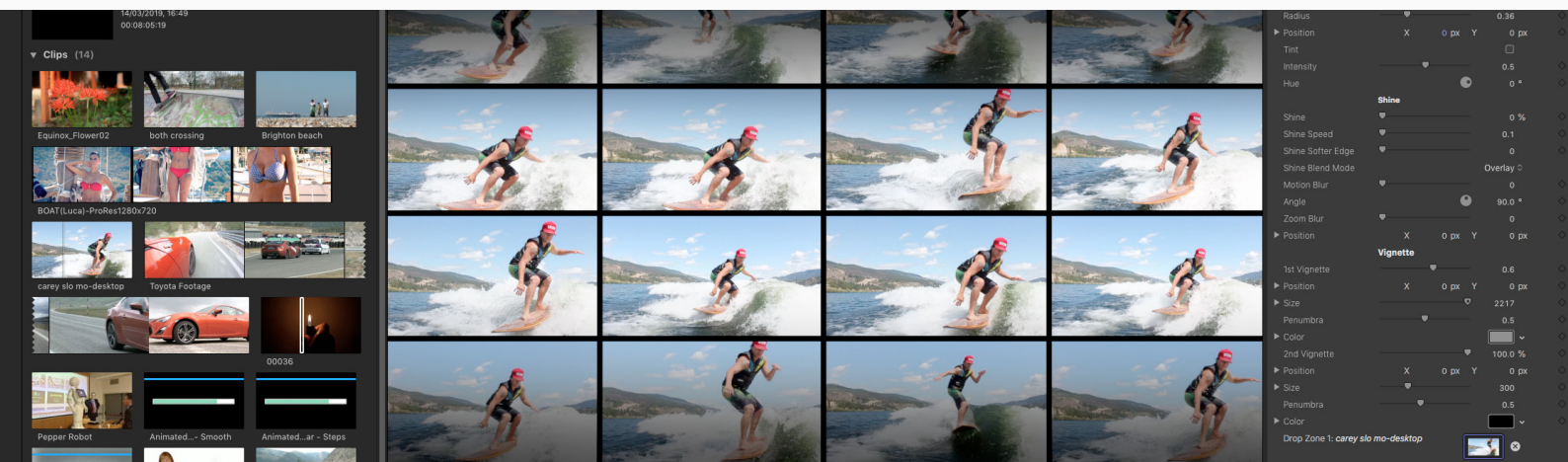
Custom Text templates adds on the variety of effects achievable with this plugin. Text can build in/out and customized in such a way to stand out from the background.

In the 'Text Editor' edit the required text. The parameters in the 'Text Stylization' section can be used to 'Position' and 'Scale' the text. Select a 'Build In / Out' from the drop down menu and adjust the animation using 'In Speed' and Out Speed'.

'BG Stylization' allows you to customize the look of the background clips.



# Rolling

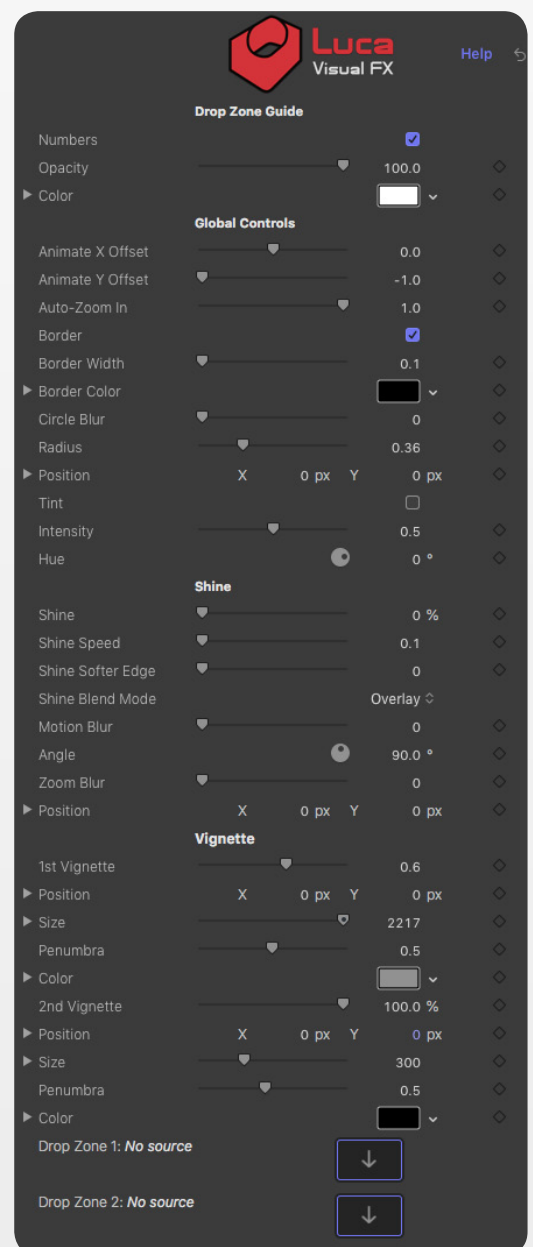


Rolling is the fourth template. It comes with an automatic rolling in and out animation and brings tiles closer to the viewer. Plenty of ways to customize this nice template, which even boasts not one but two separately customizable vignette.

Use the 'Global Controls' to fine tune the overall look and feel of the template. Keep the 'Border' tick box checked or uncheck it for a borderless look and use 'Circle Blur', 'Radius' and 'Position' to apply focus to a particular area.



Add 'Shine' for an animated glistening effect to cross the overall clip and use the 'Shine' parameters to fine tune the look. Keyframe in 'Motion Blur' to add some motion texture to the effect.



## Specifications & Requirements

---



**Final Cut Pro X**  
Version 10.4.4 or later



**FxFactory 7.1.1**

MacOS Sierra and MacOS High Sierra version 10.12.4 or later

FxFactory requires AMD, ATI, NVIDIA or Intel HD graphics.  
A graphics card with at least 512MB of VRAM is highly recommended.  
(Free Download: <http://www.noiseindustries.com/fxfactory/download>)