



Luca
Visual FX

Light Leaks
Light Leaks



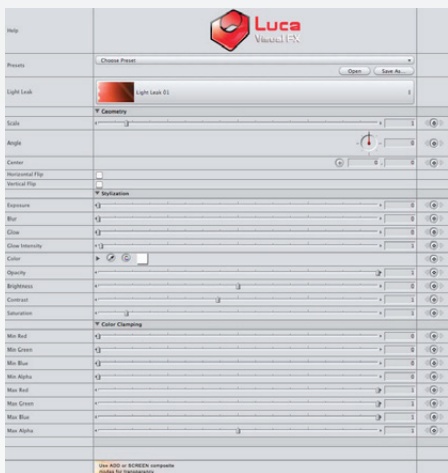


Luca's Plugins

Luca's Light Leaks

With Luca's Light Leaks you have the option to customize 15 different light leaks to use in your project. With Geometry and Stylization controls at your disposal as well as the possibility to apply extra filters or use several instances of the generator, there are potentially endless variations of light leaks to meet your requirements!

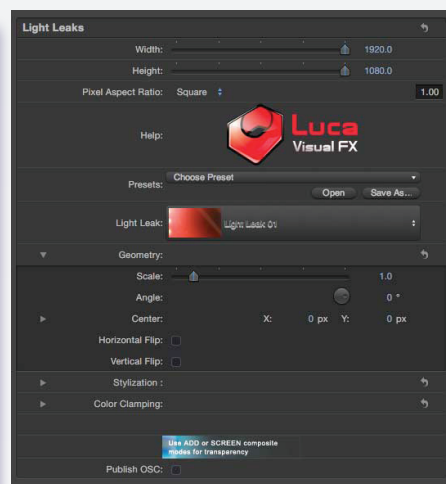
This generator is compatible with Final Cut Pro 6.0 and 7.0, Final Cut Pro X, Final Cut Express 4.0 or later, Apple Motion 3.0 or later, Premiere Pro CS 6 and Adobe After Effects 8.0 or later (Premiere Pro users please see page 8 for further instructions) To install simply unzip the downloaded file and double click the icon. Restart the software and you are ready to go.



Pic 01. Final Cut Pro 6



Pic 02. After Effects CS4



Pic 03. Motion 5

Full SPECIFICATIONS & REQUIREMENTS can be found at the bottom of this document.

Light Leaks enable you to change and adjust:

Presets

Add a pre-designed light leak to your footage. These can be adjusted and customized to your needs.

Light Leaks

Add a light leak asset.

Geometry

Adjust the scale, angle and center of the light leak.

Stylization

Customize the look of the light leak.

Color Clamping

Adjust the RGB values of the light leaks.

Presets

Choose a pre-designed preset like Cool Blue Leak, Flashing Leak, Large Bright Leak, Red Leak etc. or simply build your own. If the presets the plugin ships with are not quite what you are looking for then you can modify them in order to achieve the desired look.



Pic 04.

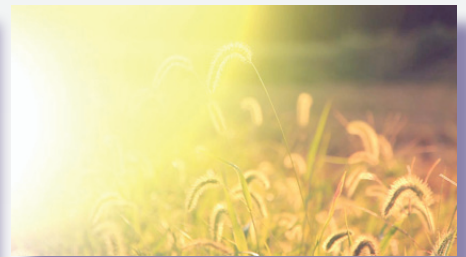
Preset Examples:



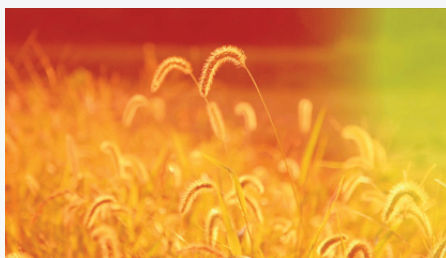
Pic 05. Cool Blue Leak



Pic 06. Green Light Leak



Pic 07. Large Bright Leak



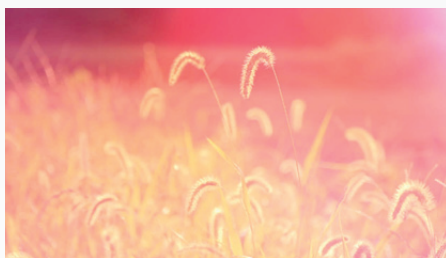
Pic 08. Light Leak 04 Red Variation



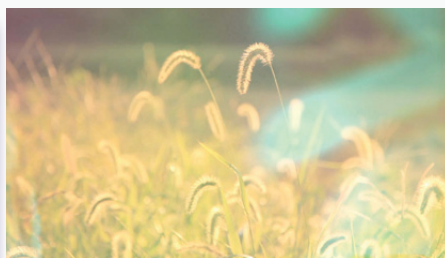
Pic 09. Light Leak 12 - Dramatic Variation



Pic 10. Prismatic Light Leak



Pic 11. Red Leak

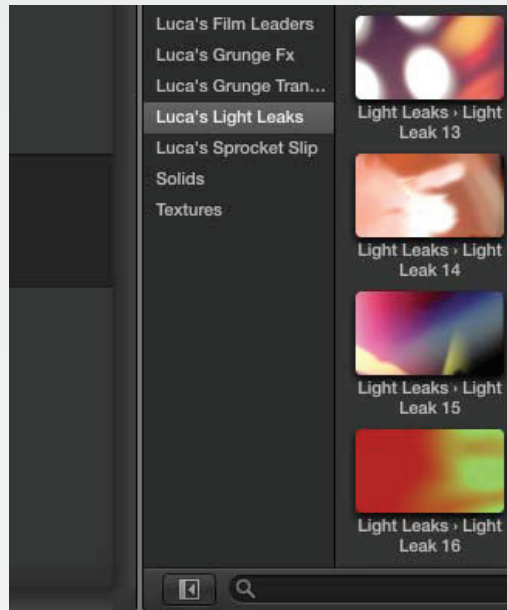


Pic 12. Vintage Multicolor



Pic 13. Vintage Multicolor 02 (Light Leak 14)

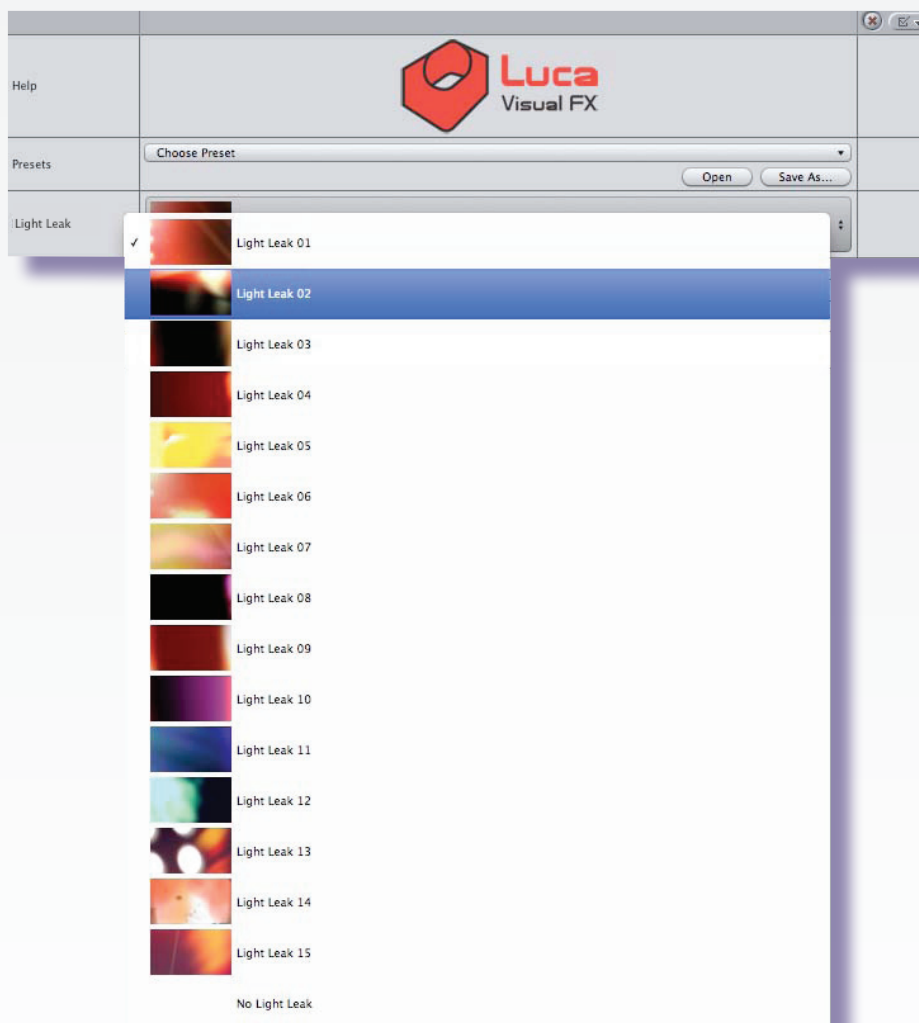
Note: Due to some limitations of the current version of FCP X, it is not possible to publish custom parameters such as Light Leak menu. As a workaround, we provide an individual FCP X template for each asset and preset.



Pic 14.

Light Leak

Select from 15 extraordinary light leaks from a drop-down menu, each one uniquely different from the next.



Pic 15.

Light Leak Selection:



Pic 16. Light Leak 01



Pic 17. Light Leak 02



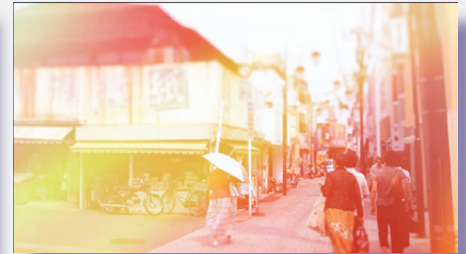
Pic 18. Light Leak 03



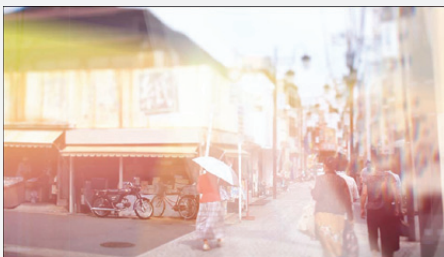
Pic 19. Light Leak 04



Pic 20. Light Leak 05



Pic 21. Light Leak 06



Pic 22. Light Leak 07



Pic 23. Light Leak 08



Pic 24. Light Leak 09



Pic 25. Light Leak 10



Pic 26. Light Leak 11



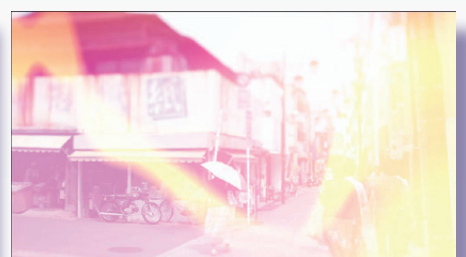
Pic 27. Light Leak 12



Pic 28. Light Leak 13



Pic 29. Light Leak 14



Pic 30. Light Leak 15

Geometry

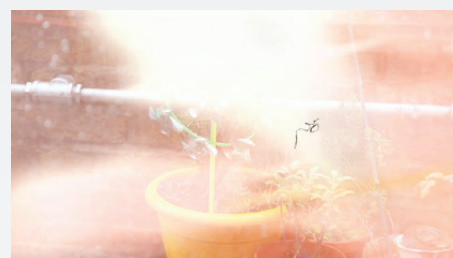
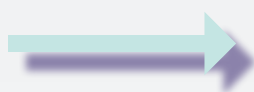
These controls allow the user to modify **Scale**, **Angle** and **Center** of the assets in order to customize the final look. Using these controls together with the **Stylization** controls and even with added filters will definitely help create your very own Light Leak.



Pic 31.



Pic 32. Original



Pic 33. With scale, angle and center position modified

Geometry Controls:

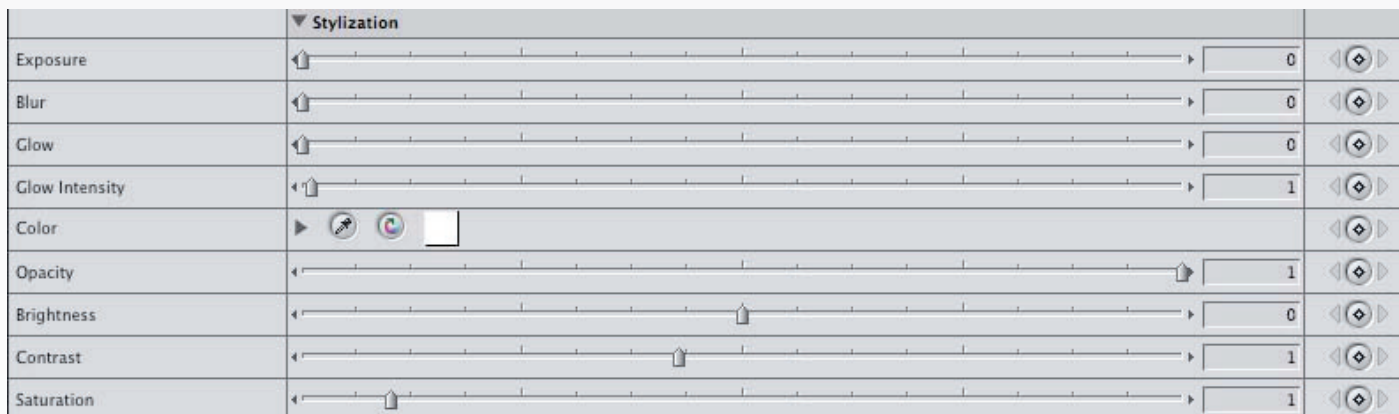
- Scale
- Angle
- Center
- Horizontal Flip
- Vertical Flip

Adjust the scale of your light leak.
 Rotate the angle of your light leak.
 Set the center point of your light leak.
 Flip the texture horizontally.

Flip the texture vertically.

Stylization

Modify the default look of a given Light Leak. Similarly to other generators like **Grunge FX** and **Grunge Transitions**, using **Stylization** controls together with **Geometry** controls, **Color Clamping** and even extra filters may indeed contribute to the creation of compelling Light Leaks.



Pic 34.



Pic 35. Original



Pic 36. With exposure, blur and glow modified

Stylization Controls:

- Exposure
- Blur
- Glow
- Glow Intensity
- Color
- Opacity
- Brightness
- Contrast
- Saturation

Control the exposure of the Light Leak in order to increase its light intensity.
 Determine the amount of blur.
 Add a glow.
 Set the glow intensity.
 Modify the tint of the Light Leak.
 Set the opacity.
 Adjust the brightness.
 Change the contrast.
 Control the saturation of the colors.

Color Clamping

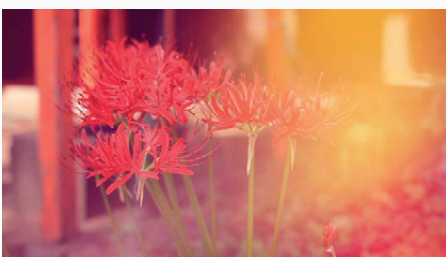
Use **Color Clamping** parameters if you wish to modify the lower and/or higher range for each individual channel (RGB). You may want to use **Color Clamping** when more radical color stylization is desired.

The eight parameters available are:

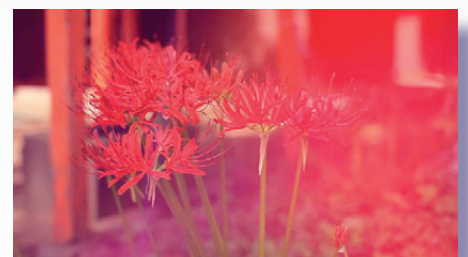
- Min Red
- Min Alpha
- Max Blue
- Min Green
- Max Red
- Max Alpha
- Min Blue
- Max Green

▼ Color Clamping			
Min Red		0.15	◀▶
Min Green		0.87	◀▶
Min Blue		0.76	◀▶
Min Alpha		1	◀▶
Max Red		0	◀▶
Max Green		0.22	◀▶
Max Blue		0	◀▶
Max Alpha		1.02	◀▶

Pic 37.



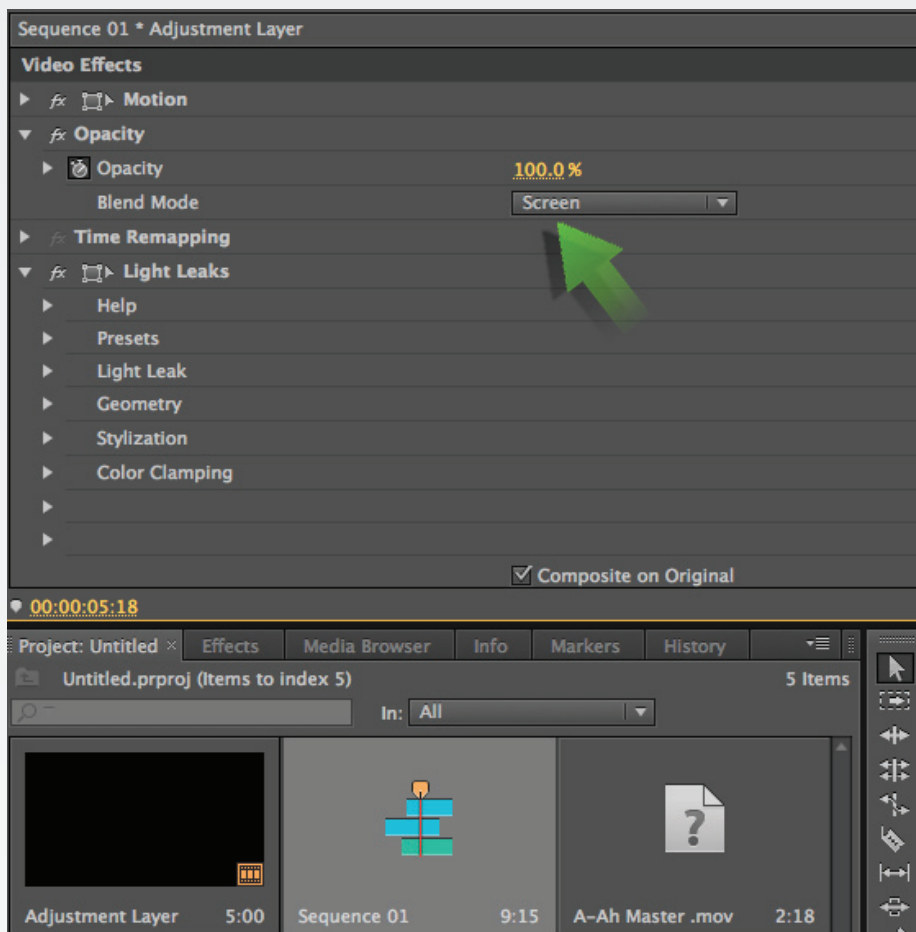
Pic 38. Original



Pic 39. With Max Green modified

Premiere Pro users

When using Light Leaks inside Premiere Pro, apply the generator to an adjustment layer placed on top of your video and select/use 'SCREEN' Blend Mode to get rid of the black background.



Pic 21. Premiere Pro CS 6 Blend Mode

Specifications & Requirements



Motion 3.0 or later



Final Cut Pro 6.0 or later



Adobe After Effects 8.0 or later
(CS3, CS4, CS5 and CS6)



Final Cut Express 4.0 or later



Final Cut Pro X



Premiere Pro CS 6.0 or later

Mac OSX Lion version 10.7 or above

ATI, NVIDIA or Intel HD* graphics processor

FxFactory 4.0 (Free Download: <http://www.noiseindustries.com/fxfactory/download>)

Premiere Pro users require:

- Premiere Pro 6.0 or above
- Mac OS X Mountain Lion version 10.8 or above

* The Intel GMA 950 and X3100 are not supported.



LUCA VISUAL FX Ltd.

www.lucavisualfx.com
luca@lucavisualfx.com

