



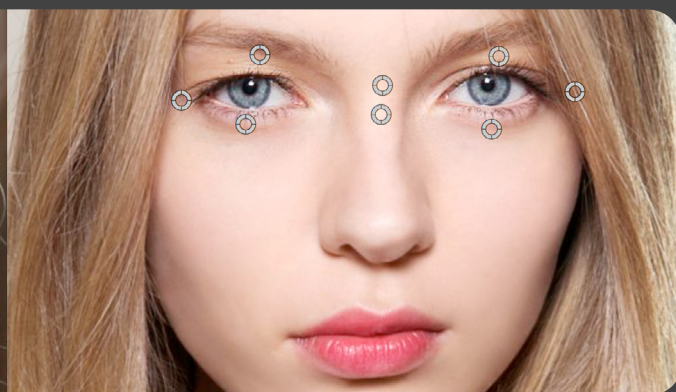
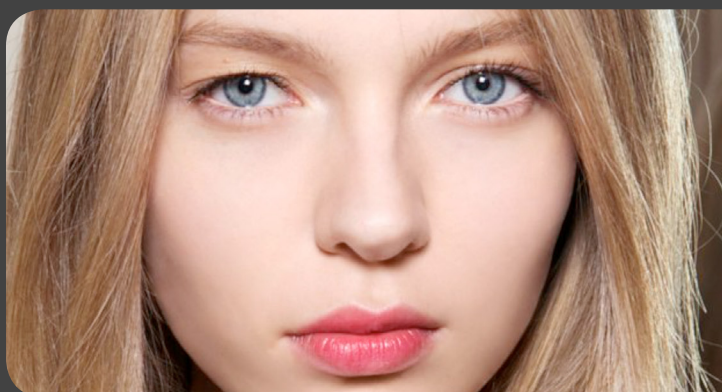
Luca
Visual FX



Image Sharpener

For Final Cut Pro X

These effects designed for Final Cut Pro X was created as an alternative to Apple Sharpen and Unsharp Mask filters. It consists of two templates: one affects the entire image while the other sharpens only a customizable localized area.



FCPX Sharpen Filter



Motion 5 Unsharp Mask



Luca's Image Sharpener

This plugin can sharpen the images without adding artefacts and weird contrasts to the edges while enhancing details and the overall crispiness of the footage.

It can be use on:

- 1) Old footage
- 2) Compressed videos
- 3) Soft footage
- 4) Good footage to which the user wishes to add a crisp texture or feel.

Once applied, the filter already produces a gentle sharpening effect.

Push **Sharpen Details** and **Sharpen More** values to the maximum in order to get the first mild sharpness applied.

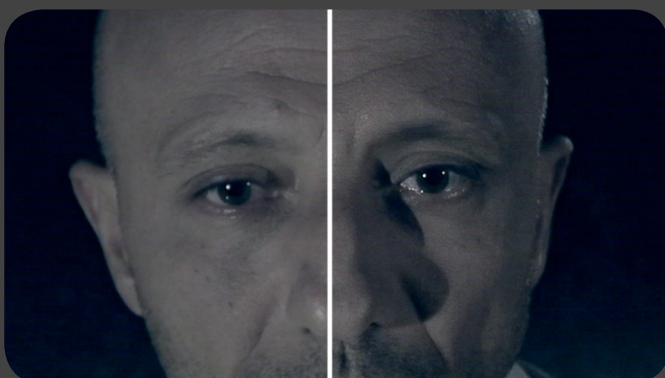
If you need more, **Boost** parameter will add a substantially stronger sharpening effect.

While using this parameter you may notice that the image becomes brighter. You can easily compensate that by using the **Image Adjustment** controls, **Brightness** and **Contrasts**.



Although the first 3 parameters of Image Sharpener add visible sharpening to the images, there is a very important control which the user should use very gently, called **Radius** in the **Edges** group.

It adds stronger contrasts to edges and darker lines. The more you push the values up, the more you should consider using the **Glow** parameter which help keep large areas smooth and artefact free.



The drop-down menu called **Bright Area** includes three choices, Low, Medium and High and affects exclusively bright large areas. When using these the user can apply various levels of soft glow to white areas in order to reduce the visibility of edges or simply make them less harsh.

The neext parameter is called **Softener** and can make a difference when used along with

Radius and **Glow**. The result depends entirely on the footage used but generally speaking it can add softness or more sharpness and we strongly recommend familiarizing yourself with it by checking the different results produced by a variety of media.

Blend modes highly affect the look of the images. For smoother filtering, the user should stick with **Soft Light** blend mode, however in some cases you may want to choose a more “marked” sharpening by selecting **Overlays** and in some rare cases **Hard Light**.

In order to reduce the overall sharpness obtained using all the parameters mentioned above. use the **Mix** slider to taste.



LOCALIZED SHARPNESS Template



The second template of this plugin applies sharpness only to a specific area chosen by the user via the 8 On Screen Controls provided. This template includes the exact same parameters of the default one with the additional **Feather** slider, which enables the user to decide how soft the edges of the selected area should be.



Specifications & Requirements



Final Cut Pro X
Version 10.4.4 or later



FxFactory 7.0

MacOS Sierra and MacOS High Sierra version 10.12.4 or later

FxFactory requires AMD, ATI, NVIDIA or Intel HD graphics.
A graphics card with at least 512MB of VRAM is highly recommended.
(Free Download: <http://www.noiseindustries.com/fxfactory/download>)